

# SKIP TO MY LOU

**C** **G7**

Choose your part-ner skip to my Lou Choose your part-ner skip to my Lou

**C** **G7** **C**

Choose your part-ner skip to my Lou Skip to my Lou my dar - ling.

**C** **G7**

Left and right oh skip to my Lou Left and right oh skip to my Lou

**C** **G7** **C**

Left and right and skip to my Lou Skip to my Lou my dar - ling.

# BUFFALO GALS

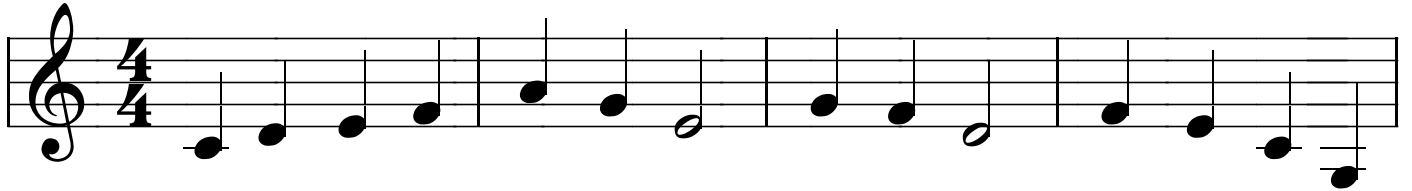
C



G<sup>7</sup>



C

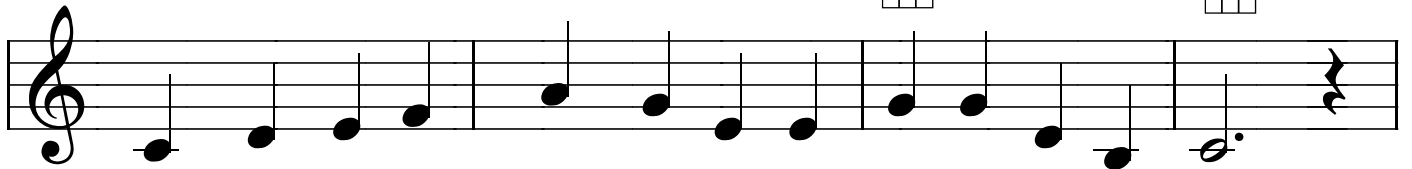


I was walk - ing down the street down the street Down the street a

G<sup>7</sup>



C

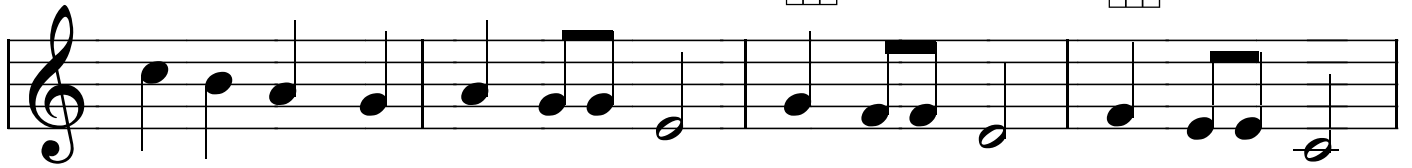


hand - some gal I chanced to meet Oh she was fair to see

G<sup>7</sup>



C

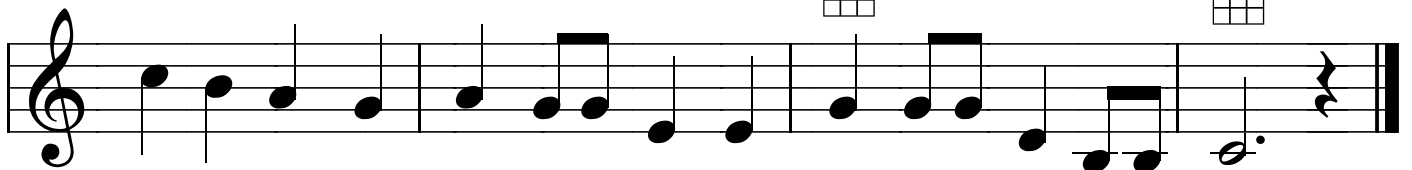


Buff-'lo gals please come out to-night come out to-night come out to-night

G<sup>7</sup>



C



Buff-'lo gals please come out to-night and dance by the light of the moon.

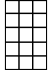
# DARLING NELLIE GRAY

There's a low green val - ley on the old Ken - tuck - y shore There I've  
whiled ma - ny hap - py hours a - way And while  
sit - ting and a sing - ing by the lit - tle cot - tage door Where  
lived my dar - ling Nel - lie Gray Oh my  
dar - ling Nel - lie Gray they have tak - en her a way And I'll  
nev - er see my dar - ling an - y more I'm a  
sit - ting by the riv - er and I'm weep - ing all the way For you've  
gone from the old Ken - tuck - y shore.

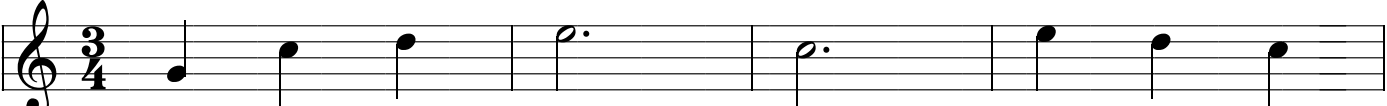
**D**  
**D7**  
**G**  
**D**  
**A7**  
**D**  
**D**  
**A7**  
**D**  
**A7**  
**D**  
**D7**  
**G**  
**D**  
**A7**  
**D**

# DOWN IN THE VALLEY

**C**

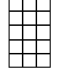


**3/4**




Down in the val - ley val - ley so

**G7**

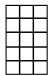


**low**




Late in the eve -

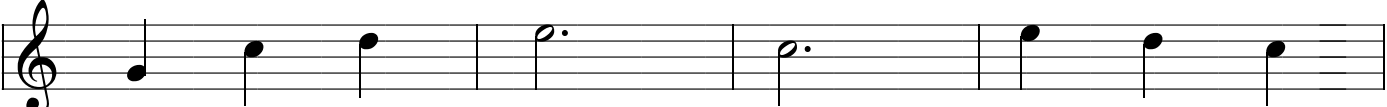
**C**



**ning**

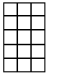


hear the train blow




Hear the train blow dear hear the train

**G7**




**blow**

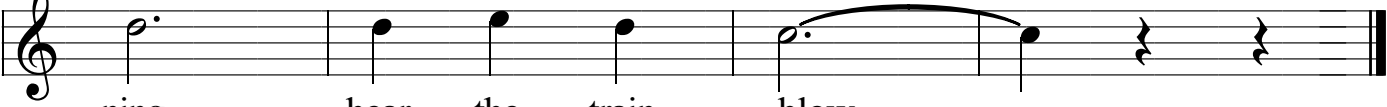


Late in the eve -

**C**

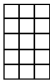
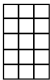

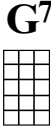
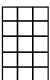



**ning**



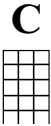
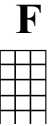
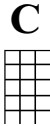
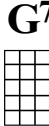

hear the train blow.


# HEY, MR. BANJO


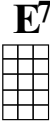
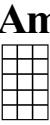
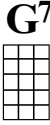



Hey, Mis - ter Ban - jo, play a tune for me,

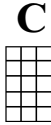
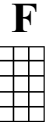
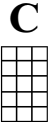
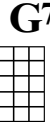
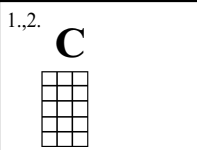
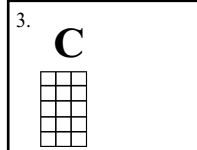


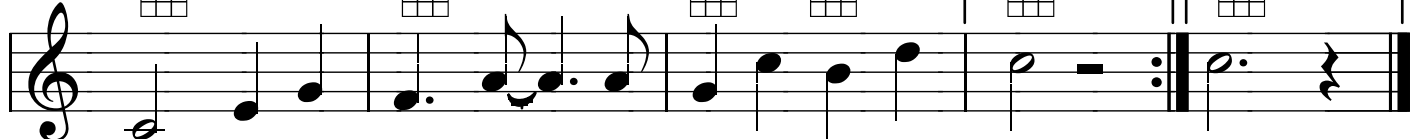
Play, Mis - ter Ban - jo, A hap - py mel - o - dy. We'll all



clap our hands, and we'll stamp our feet, You keep strum - min' while we keep the beat.



Play, Mis - ter Ban - jo, a pret - ty mel - o - dy. dy.

# OUR BOYS WILL SHINE TONIGHT

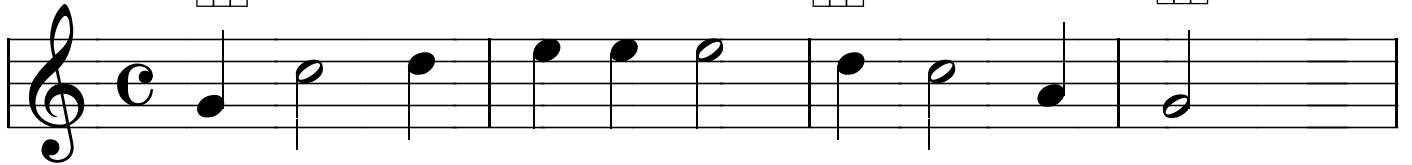
**C**



**F**



**C**

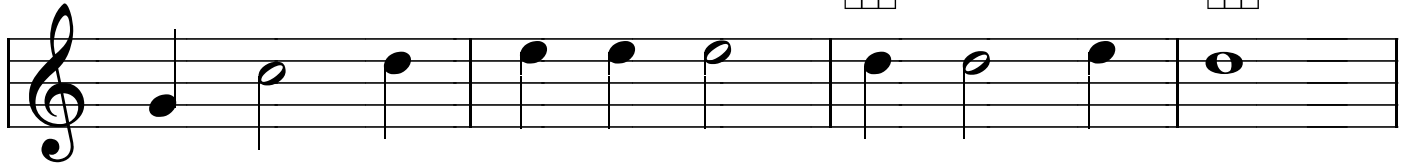


Our boys will shine to - night our boys will shine

**D7**



**G7**



Our boys will shine to - night all down the line

**C**



**F**



**C**

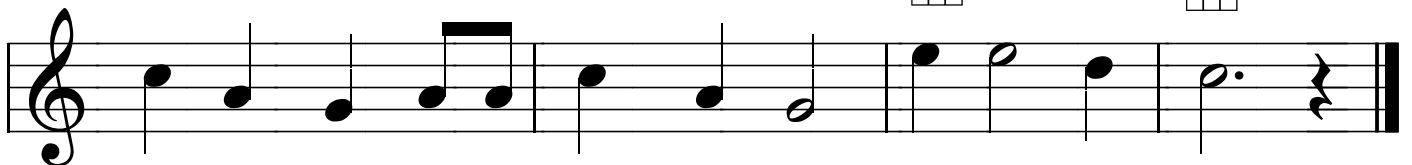


Our boys will shine to - night our boys will shine When the

**G7**



**C**



sun goes down and the moon comes up our boys will shine.

# On Top Of Old Smokey

The image shows a musical score for the song "On Top Of Old Smokey". It consists of eight staves of music in 3/4 time. The lyrics are written below the notes, and guitar chords are indicated above the staves. The chords are C, F, G7, and A. The lyrics are: "On top of Old Smokey all covered with snow I lost my true lover came court-in' too slow But court-in's a pleasure oh flirt-in's a grief A false heart-ed lover is worse than a thief."

C  
y

F  
y

C  
y

G7  
y

C  
y

F  
y

C  
y

G7  
y

C  
y

A  
y

C  
y

C  
y

On top of Old Smokey all  
cov - ered with snow I  
lost my true lov - er came  
court - in' too slow But  
court - in's a pleas - ure oh  
flirt - in's a grief A  
false heart - ed lov - er is  
worse than a thief.

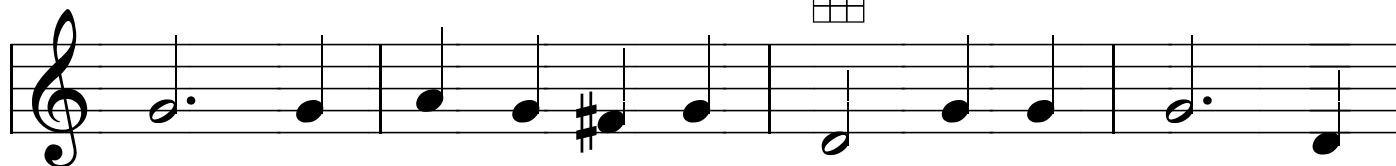
# THERE IS A TAVERN IN THE TOWN

C



There is a tav-ern in the town in the town And

G7

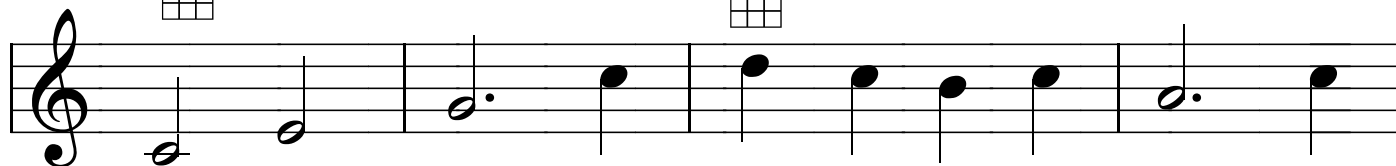


there my true love sits him down sits him down And

C



F

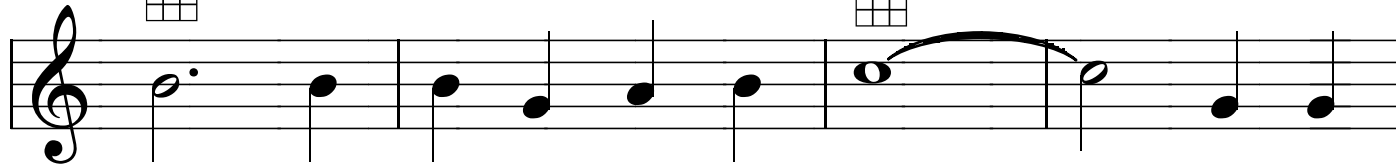


drinks his wine 'mid laugh - ter gay and free But

G7



C

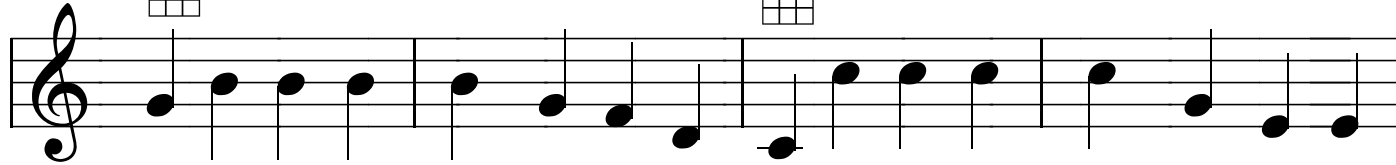


nev - er nev - er thinks of me Fare the

G7



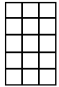
C

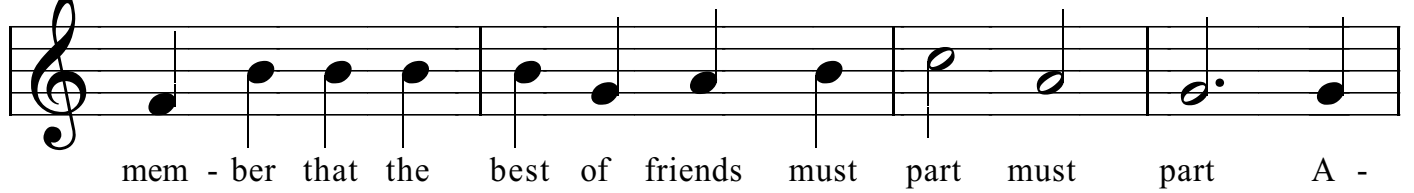


well for I must leave thee do not let the part - ing grieve thee And re -

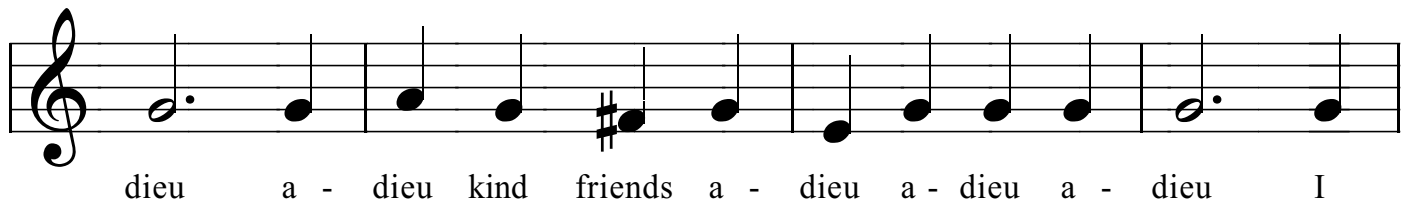


THERE IS A TAVERN IN THE TOWN - 2

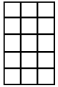
**G<sup>7</sup>**  


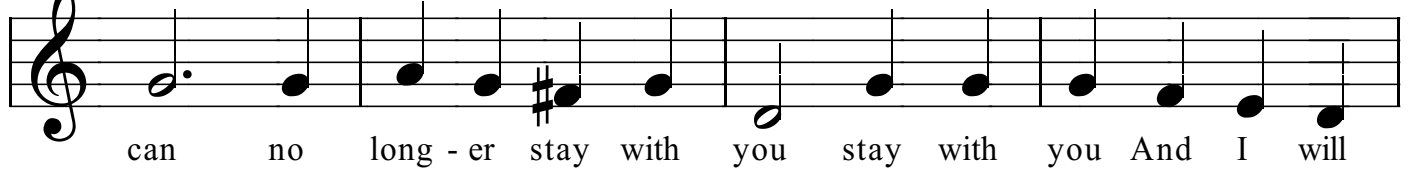


mem - ber that the best of friends must part must part A -

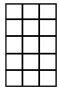


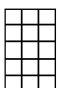
dieu a - dieu kind friends a - dieu a - dieu a - dieu I

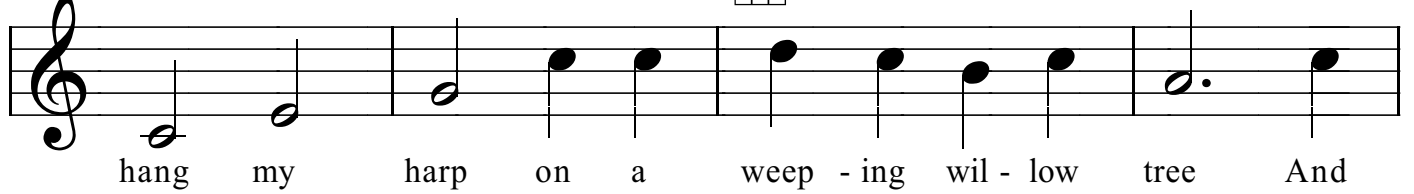
**G<sup>7</sup>**  




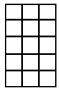
can no long - er stay with you stay with you And I will

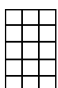
**C**  


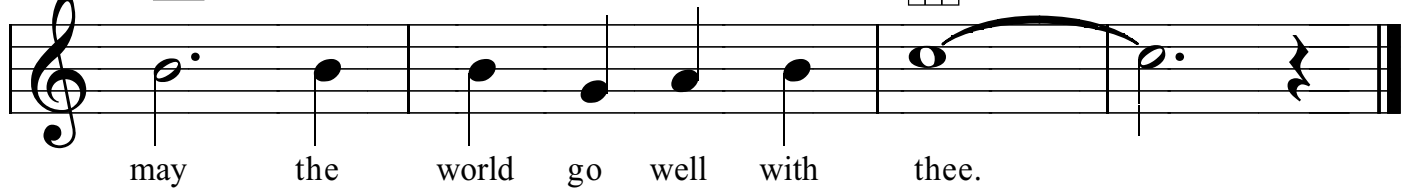
**F**  




hang my harp on a weep - ing wil - low tree And

**G<sup>7</sup>**  


**C**  




may the world go well with thee.

# BILLY BOY

Musical notation for the first line of the song, featuring a treble clef and a 4/4 time signature. The melody consists of quarter and eighth notes. The lyrics are: "Oh where have you been, Bil - ly Boy, Bil - ly Boy? Oh". Chord symbols "C" are placed above the second and fifth measures.

Musical notation for the second line of the song. The melody continues with quarter and eighth notes. The lyrics are: "where have you been, charm - ing Bil - ly? I have". Chord symbols "F", "C", and "G7" are placed above the second, third, and fourth measures respectively.

Musical notation for the third line of the song. The melody continues with quarter and eighth notes. The lyrics are: "been to seek a wife, She's the joy of my life, She's a". A chord symbol "C" is placed above the fifth measure.

Musical notation for the fourth line of the song, including two endings. The melody continues with quarter and eighth notes. The lyrics are: "young thing and can-not leave her moth-er. Oh moth-er." Chord symbols "Cdim", "G7", "C", "G7", and "C" are placed above the first, second, fourth, fifth, and seventh measures respectively. The first ending is marked "1." and the second ending is marked "2.".

# HAPPY BIRTHDAY TO YOU

Musical notation for the first line of the song. It features a treble clef, a key signature of one sharp (F#), and a 3/4 time signature. The melody begins with a whole rest, followed by a quarter note G4, a quarter note A4, and a quarter note B4. This is followed by a repeat sign. The melody continues with a quarter note G4, a quarter note A4, a quarter note B4, a quarter note C5, a quarter note B4, a quarter note A4, and a quarter note G4. Above the staff, the chords G, D7, and G are indicated. Below the staff, the lyrics are: Hap - py Birth - day to you, Hap - py Birth - day to you, Hap - py

Musical notation for the second line of the song. It features a treble clef, a key signature of one sharp (F#), and a 3/4 time signature. The melody begins with a quarter note G4, a quarter note A4, a quarter note B4, a quarter note C5, a quarter note B4, and a quarter note A4. This is followed by a quarter note G4, a quarter note A4, and a quarter note B4. The melody then branches into two endings: the first ending is a quarter note G4, and the second ending is a quarter note G4. Above the staff, the chords C, G, D7, 1. G, and 2. G are indicated. Below the staff, the lyrics are: Birth - day dear (some - one) Hap - py Birth - day to you. Hap - py you.